

Short Report



The facade of the Museum Barberini photographed from the Old Market Square. | Museum Barberini

Museum Barberini

Alter Markt Humboldtstraße 5–6 Tel: +49 331 236014–499
14467 Potsdam

besucherservice@museum-barberini.de
<https://www.museum-barberini.de>

Welcome!

Art museum located in Potsdam's historic center Initiated by Hasso Plattner, the founder of the German software company SAP and a patron of the arts, the Barberini has established itself as one of the most popular art museums in Germany with international exhibitions and an extraordinary collection of Impressionist paintings.

TEST RESULT

for

Museum Barberini

14467 Potsdam, Certificate-ID: PA-14305-2025



This offer was classified according to
the criteria of the nationwide label

»Tourism for All«

and, in the period from

May 2025 – April 2028

is entitled to use the label

»Accessibility checked«

and the associated pictograms
in accordance with the contract.



The bright, open-plan entrance hall of the museum with an information desk and seating.

Museum Barberini



View of an exhibition room in the Impressionist collection at the Museum Barberini with visitors

Museum Barberini



The Museum Barberini offers public and private guided tours with interpretation in German Sign Language (DGS) through the collection and exhibitions.

Museum Barberini



Excerpt from a workshop for blind people with headphones and tactile elements

Museum Barberini

Accessibility at a glance

- Parking space for people with disabilities (registration is required)
- Stepless entrance
- All rooms and facilities that can be used by guests are accessible without steps, via elevators or ramps
- 90 cm minimum width of all elevated passageways/doors
- WC for people with disabilities
- Assistance dogs welcome
- Guided tours for people with disabilities
- [BarberiniApp](#)

Information for people with walking difficulties and wheelchair users

All areas relevant for testing meet the quality criteria of the label "**Accessibility certified – accessible for people with walking disabilities and for wheelchair users**".

Some **information on accessibility** are listed below. For detailed information please see the evaluation report.

- There are two parking spaces for people with disabilities in the underground parking garage.
- The streetcar station "Alter Markt/Landtag" is approx. 250 m away and Potsdam main station is 750 m away.
- All rooms and facilities that can be used by guests are accessible without steps/at ground level or via a ramp or elevator.
- There are no gradients of more than 3%.
- All doors/passages that can be used by guests and are raised are at least 90 cm wide.
- The counter/cash desk is 95 cm high.
- Exhibits and information can mainly be viewed while seated.
- Seating is available.
- The Barberini Café Restaurant has wheelchair-accessible tables (maximum height 80 cm, wheelchair-accessible at a height of 67 cm and a depth of 30 cm).
- There are two public WCs for people with disabilities, which can be accessed from both sides (at least 90 cm). The grab rails on the WC can be flipped-up.

Information for people with hearing impairments and deaf people

Some **information on accessibility** are listed below. For detailed information please see the evaluation report.

- There is no inductive hearing system available.
- An outgoing emergency call in the elevator is only confirmed acoustically. Alternatively, stairs are available.
- Information about the exhibits is provided in written form.
- Seating is available.
- In the Barberini Café Restaurant, there are tables with bright and glare-free lighting, with no lamps standing or hanging on them that interfere with the field of vision or eye contact.
- Videos on the [BarberiniApp](#) are subtitled in both German and English.

- Guided tours are offered for people with hearing impairments and deaf people (in German sign language). Advance booking is necessary.

Information for visually impaired and blind people

All areas relevant for testing meet the quality criteria of the label "**Accessibility certified – partially accessible for people with visual impairments and for blind people**".

Some **information on accessibility** are listed below. For detailed information please see the evaluation report.

- Assistance dogs are welcome.
- The signage (for orientation) is designed in easily legible and high-contrast lettering.
- There is a guidance system with floor indicators from the museum entrance to the cash desk and the elevator.
- All elevated areas that can be used by guests are brightly lit and glare-free.
- An outgoing emergency call in the elevator is confirmed acoustically. The stopping position is announced by voice in the elevator.
- Stairs have visually contrasting edges at least on the first and last step. Stairs in the stairwell have handrails on both sides.
- Information about the exhibits is visually rich in contrast.
- The app's audio tour uses Bluetooth to recognize the location and calls up descriptions of the individual exhibits and room texts.
- A tactile model is available in the collection, in the room of the Monet series.
- Seating is available.
- Guided tours are offered for visually impaired and blind people. Advance booking is necessary.
- During the guided tours, exhibits are integrated for touching.

Information for guests with cognitive impairments

Some **information on accessibility** are listed below. For detailed information please see the evaluation report.

- The streetcar station "Alter Markt/Landtag" is approx. 250 m away and Potsdam's main railway station is 750 m away.
- The name of the museum is clearly recognizable from the outside.

- The destinations of the routes are within sight or there are signs at a constantly visible distance.
- The information on the exhibits is mainly provided in writing, but not in plain language.
- There are explanations in simple language for each exhibition. These texts can be accessed on the Barberini app and on the website.
- Guided tours are offered for people with cognitive impairments. Advance booking is required.
- The guided tour for people with cognitive impairments is held in simple language.
- The contents (e.g. exhibits) of the guided tour for people with cognitive impairments are easy to understand or are explained in an easy-to-understand way (e.g. pictorially).

Image Gallery

We have put together some photos from the company / offer for you. You can find more photos in the detailed reports.



Parking

©Marina Rochel



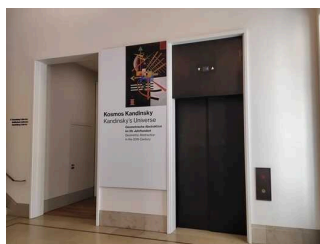
Entrance

©Marina Rochel



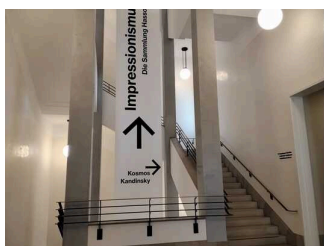
Entrance

©Marina Rochel



Showrooms

©Marina Rochel



Showrooms

©Marina Rochel



Showrooms

©Marina Rochel



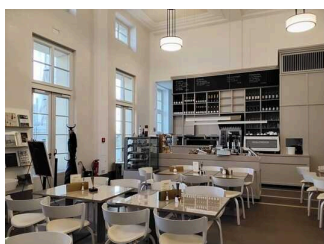
Showrooms

©Marina Rochel



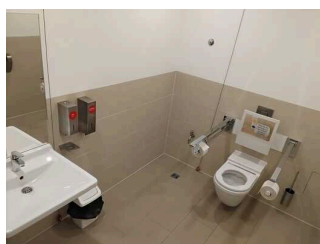
Shop

Foto: David von Becker



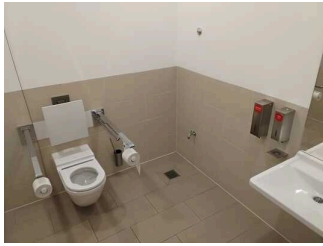
Barberini Café & Restaurant

©Marina Rochel



Barberini Café & Restaurant

©Marina Rochel



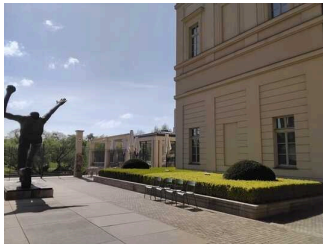
Public toilet

©Marina Rochel



Public toilet

©Museum Barberini



Courtyard

©Marina Rochel



Aids

©Marina Rochel

Information on the "Tourism for All" labeling system

All establishments and locations certified with the label "Tourism for All" meet the following quality criteria:

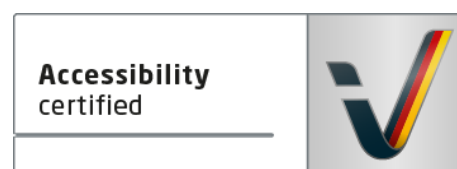
- Data and information on accessibility are collected and checked on site by **external, specially trained evaluators**. The method is not based on self-assessments.
- Data on accessibility is available **in detail** and can be viewed by the guests.
- At least one staff member has successfully passed a **training** on "**Accessibility as a comfort and quality feature**".

The labeling – explanation of the logos and pictograms

The label "**Information about Accessibility**" indicates that detailed and verified information on accessibility is available for all groups of people.



The label "**Accessibility certified**" is based on "Information about Accessibility". It means that the quality criteria defined for specific groups of people are met partially or completely.



The label "**Accessibility certified**" is available in two requirement levels:

"Accessibility certified: partially accessible".

The quality criteria are partially fulfilled for the pictured group of people, i.e. the establishment/location is partially accessible for wheelchair users. The "i" in the pictogram indicates that it is recommended to read again carefully whether the offer meets all (your oder the guest's) individual requirements.



"Accessibility certified: accessible".

The quality criteria are fulfilled for the pictured group of people, i.e. the establishment/location is accessible for wheelchair users.



There are defined quality criteria for **seven groups of people** and a **specific pictogram** for each group.

People with walking disabilities



Wheelchair users



People with hearing impairment



Deaf people



People with visual impairments



Blind people



People with cognitive impairments

